

**Primary Children Served by Jurisdiction of Case County
February 2025 - Includes IL Youth**

Lee	Collier	Charlotte	Hendry	Glades	Grand Total
903	233	167	99	41	1443

In-Home Case County Jurisdiction

Lee	Collier	Charlotte	Hendry	Glades	Grand Total
344	113	99	47	13	616

Kinship Relative - Kinship Non-Relative Placements

	Charlotte	Collier	Glades	Hendry	Lee	Grand Total
Relative	12	13	15	14	110	164
Non-relative	4	16	4	4	38	66
Grand Total	16	29	19	18	148	230

Kinship Level 1 Licensed Placements

Lee	Collier	Charlotte	Hendry	Glades	Grand Total
117	29	13	11	5	175

Foster Home Placements

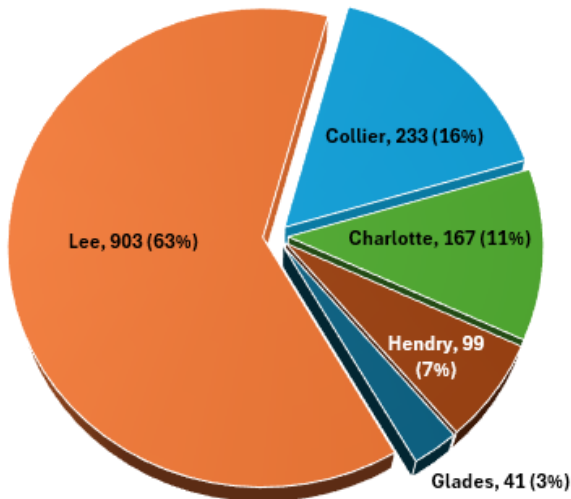
Lee	Collier	Charlotte	Hendry	Glades	Grand Total
161	40	25	14	3	243

Other Out of Home Placements

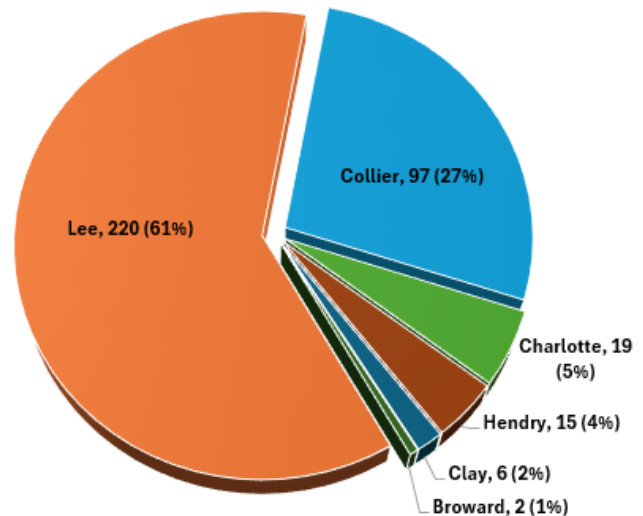
Lee	Collier	Charlotte	Hendry	Glades	Grand Total
133	22	14	9	1	179

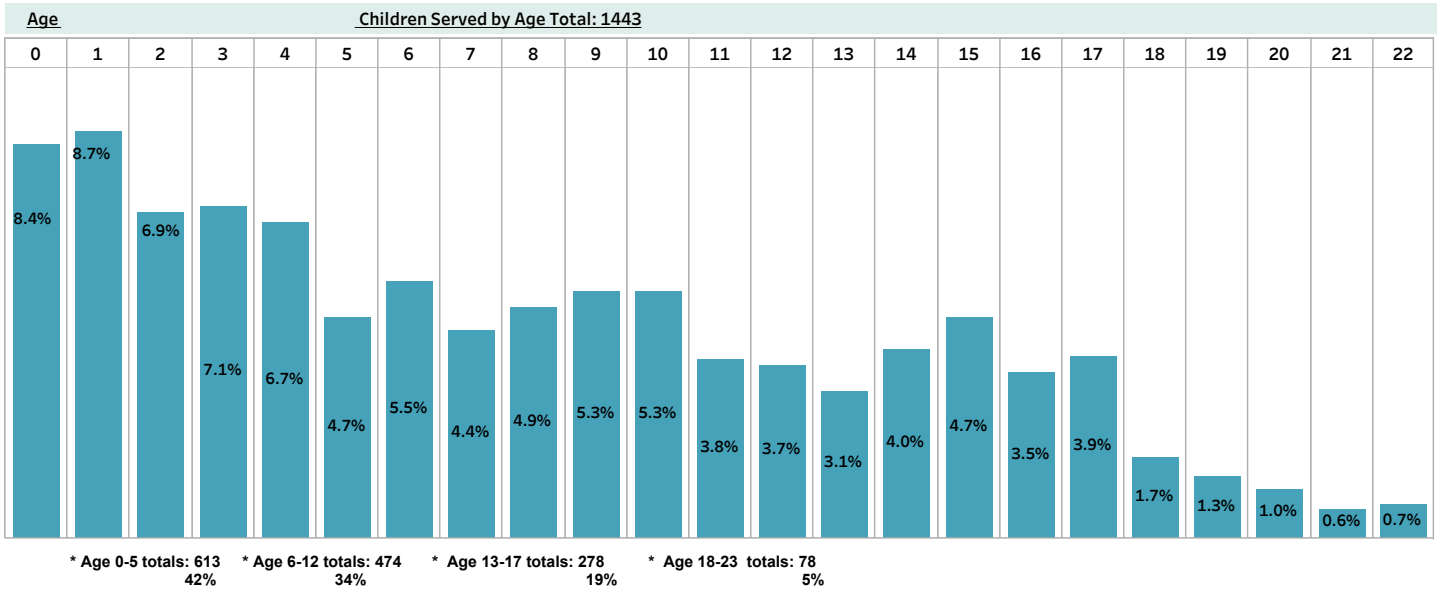
(Other Includes: Adoption Placement, Correctional Placement, Missing Child, Medical-Mental Hospital, EFC and Visitation)

**Children Served by Case County
Total: 1443**



**Children Served by Diversion & Prevention
Total: 359**





Children Served by Race

White	Black	American Indian	Asian	All Other	Grand Total
1033	347	21	6	36	1443

Children Served by Gender

M	F	Grand Total
760	683	1,443