

Primary Children Served by Jurisdiction of Case County
January 2025 - Includes IL Youth

Lee	Collier	Charlotte	Hendry	Glades	Grand Total
925	239	173	103	41	1481

In-Home Case County Jurisdiction

Lee	Collier	Charlotte	Hendry	Glades	Grand Total
363	111	100	48	7	629

Kinship Relative - Kinship Non-Relative Placements

	Charlotte	Collier	Glades	Hendry	Lee	Grand Total
Relative	13	13	14	14	116	170
Non-relative	5	12	4	4	40	65
Grand Total	18	25	18	18	156	235

Kinship Level 1 Licensed Placements

Lee	Collier	Charlotte	Hendry	Glades	Grand Total
115	31	13	12	8	179

Foster Home Placements

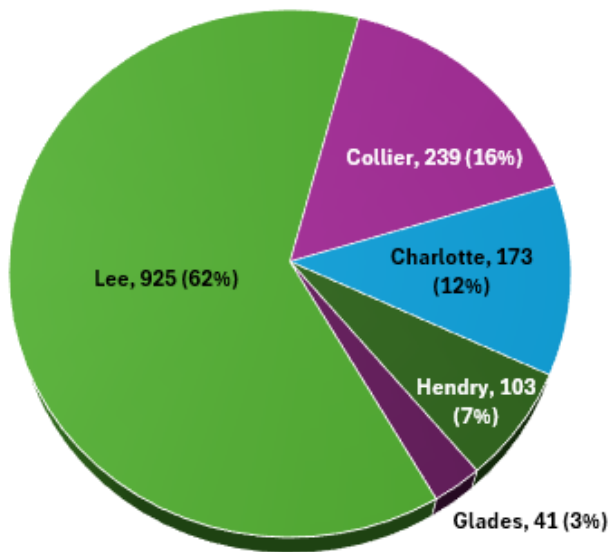
Lee	Collier	Charlotte	Hendry	Glades	Grand Total
165	46	27	17	7	262

Other Out of Home Placements

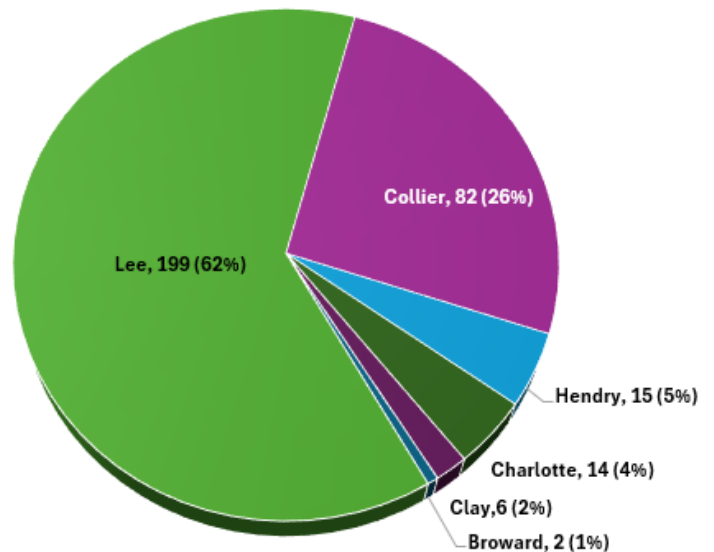
Lee	Collier	Charlotte	Hendry	Glades	Grand Total
125	26	15	8	1	175

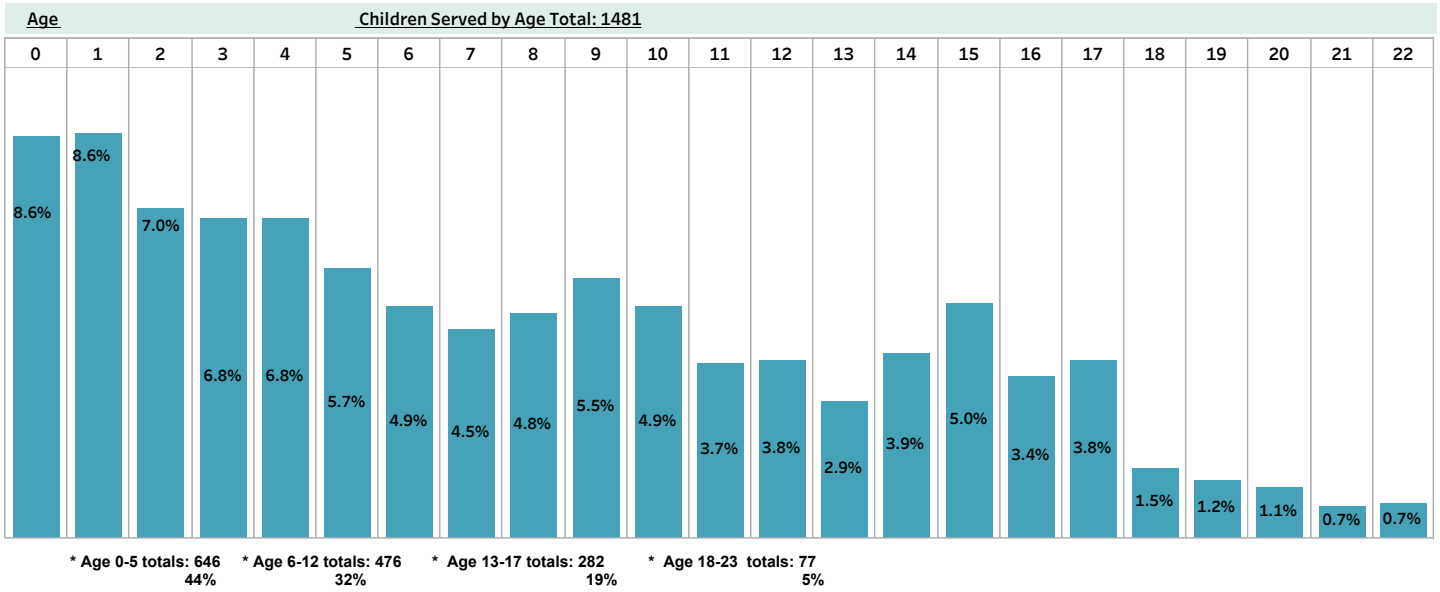
(Other Includes: Adoption Placement, Correctional Placement, Missing Child, Medical-Mental Hospital, EFC and Visitation)

Children Served by Case County
Total: 1481



Children Served by Diversion & Prevention
Total: 318





Children Served by Race

White	Black	American Indian	Asian	All Other	Grand Total
1052	363	21	4	41	1481

Children Served by Gender

M	F	Grand Total
774	707	1,481