

**Primary Children Served by Jurisdiction of Case County
December 2024 - Includes IL Youth**

Lee	Collier	Charlotte	Hendry	Glades	Grand Total
964	243	170	117	40	1534

In-Home Case County Jurisdiction

Lee	Collier	Charlotte	Hendry	Glades	Grand Total
378	116	95	58	6	653

Kinship Relative - Kinship Non-Relative Placements

	Charlotte	Collier	Glades	Hendry	Lee	Grand Total
Relative	15	16	17	9	116	173
Non-relative	6	9	5	5	37	62
Grand Total	21	25	22	14	153	235

Kinship Level 1 Licensed Placements

Lee	Collier	Hendry	Charlotte	Glades	Grand Total
114	28	14	12	4	172

Foster Home Placements

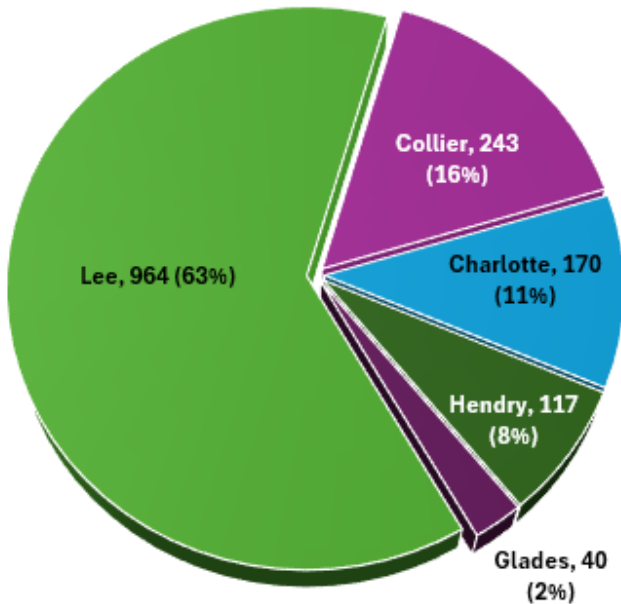
Lee	Collier	Charlotte	Hendry	Glades	Grand Total
166	43	26	19	7	261

Other Out of Home Placements

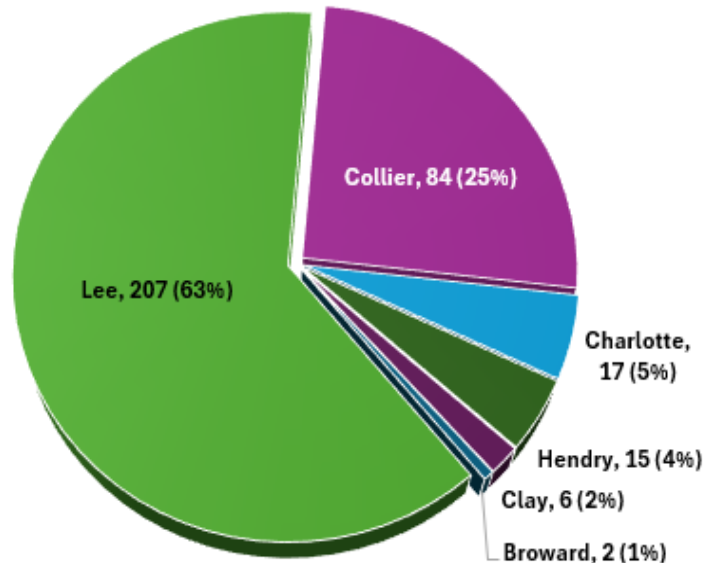
Lee	Collier	Charlotte	Hendry	Glades	Grand Total
152	31	16	12	1	212

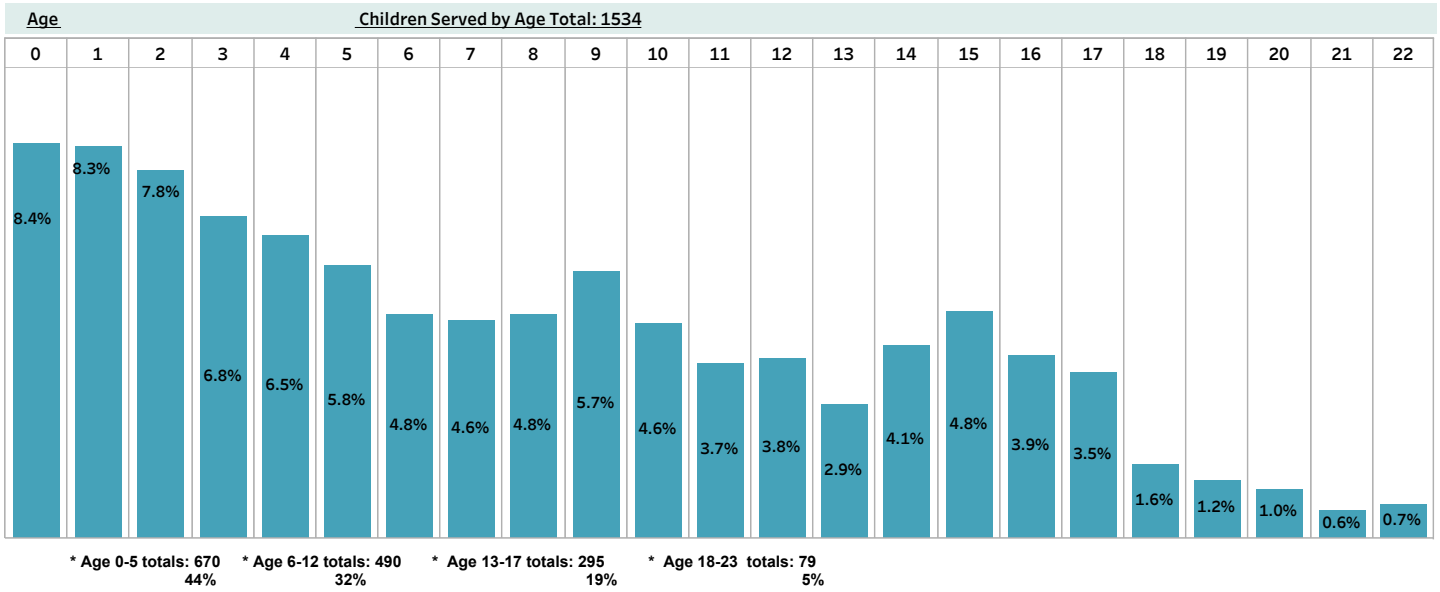
(Other Includes: Adoption Placement, Correctional Placement, Missing Child, Medical-Mental Hospital, EFC and Visitation)

**Children Served by Case County
Total: 1534**



**Children Served by Diversion & Prevention
Total: 331**





Children Served by Race

White	Black	American Indian	Asian	All Other	Grand Total
1076	386	22	5	45	1534

Children Served by Gender

M	F	Grand Total
774	760	1,534