

Primary Children Served by Jurisdiction of Case County
November 2024 - Includes IL Youth

Lee	Collier	Charlotte	Hendry	Glades	Grand Total
972	236	184	93	37	1522

In-Home Case County Jurisdiction

Lee	Collier	Charlotte	Hendry	Glades	Grand Total
398	112	110	30	5	655

Kinship Relative - Kinship Non-Relative Placements

	Charlotte	Collier	Glades	Hendry	Lee	Grand Total
Relative	16	17	15	10	104	162
Non-relative	6	7	4	4	45	66
Grand Total	22	24	19	14	149	228

Kinship Level 1 Licensed Placements

Lee	Collier	Hendry	Charlotte	Glades	Grand Total
111	30	19	10	4	174

Foster Home Placements

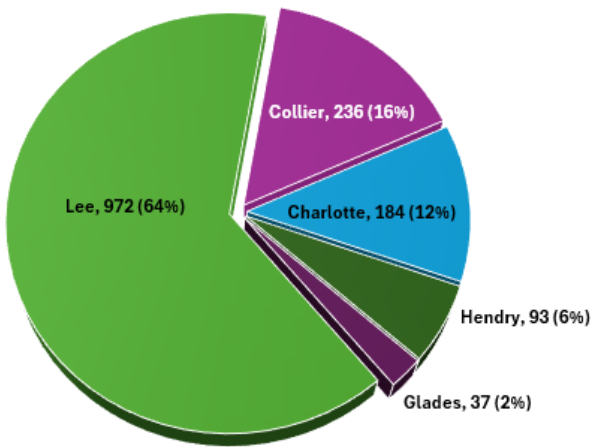
Lee	Collier	Charlotte	Hendry	Glades	Grand Total
169	42	27	19	7	264

Other Out of Home Placements

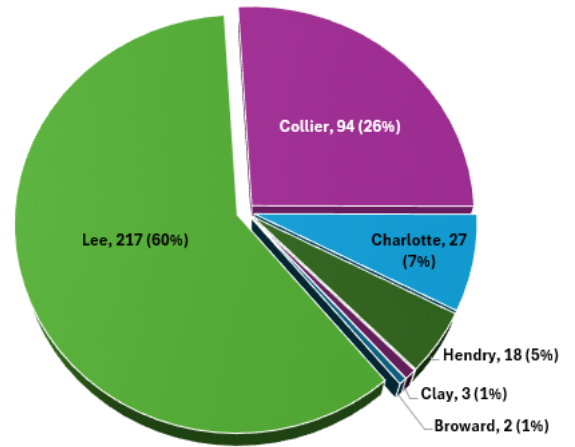
Lee	Collier	Charlotte	Hendry	Glades	Grand Total
144	28	15	11	2	200

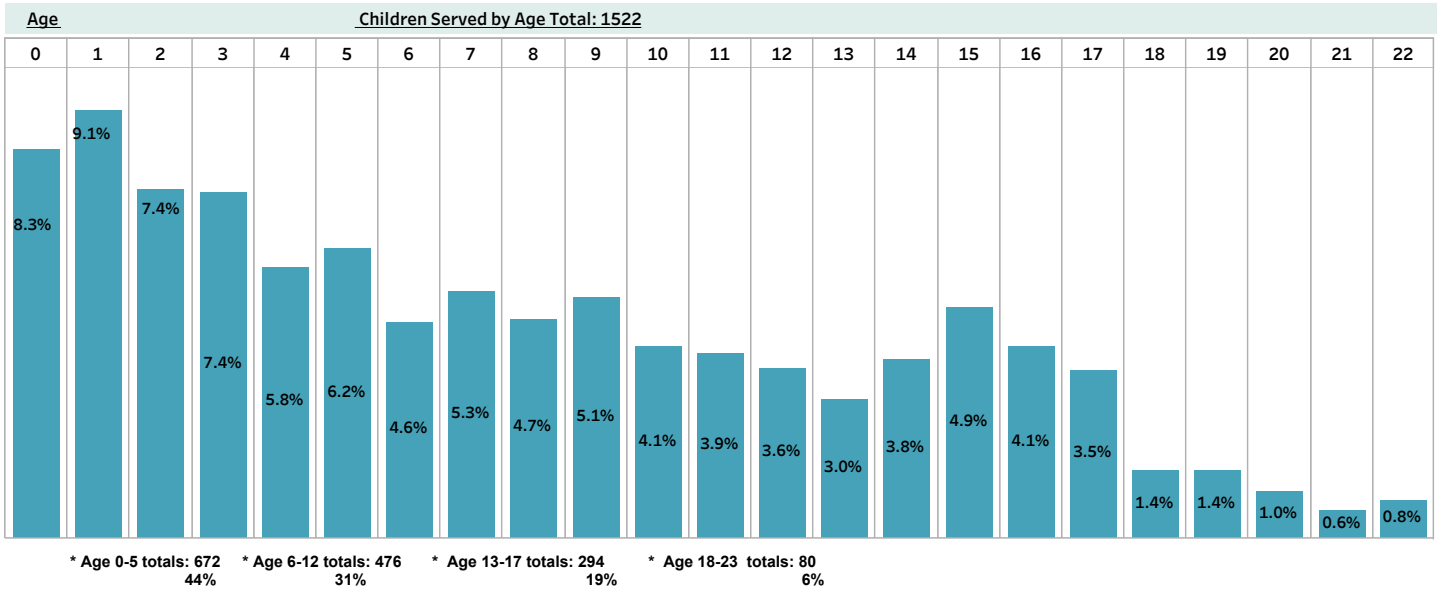
(Other Includes: Adoption Placement, Correctional Placement, Missing Child, Medical-Mental Hospital, EFC and Visitation)

Children Served by Case County
Total: 1522



Children Served by Diversion & Prevention
Total: 361





Children Served by Race

White	Black	American Indian	Asian	All Other	Grand Total
1063	388	20	4	47	1522

Children Served by Gender

M	F	Grand Total
784	738	1,522