

Primary Children Served by Jurisdiction of Case County  
October 2024 - Includes IL Youth

Lee	Collier	Charlotte	Hendry	Glades	Grand Total
981	244	179	95	30	1529

In-Home Case County Jurisdiction

Lee	Collier	Charlotte	Hendry	Glades	Grand Total
416	120	106	35	7	684

Kinship Relative - Kinship Non-Relative Placements

	Charlotte	Collier	Glades	Hendry	Lee	Grand Total
Relative	15	21	9	8	100	153
Non-relative	6	7	4	5	44	66
Grand Total	21	28	13	13	144	219

Kinship Level 1 Licensed Placements

Lee	Collier	Hendry	Charlotte	Glades	Grand Total
122	29	21	11	4	187

Foster Home Placements

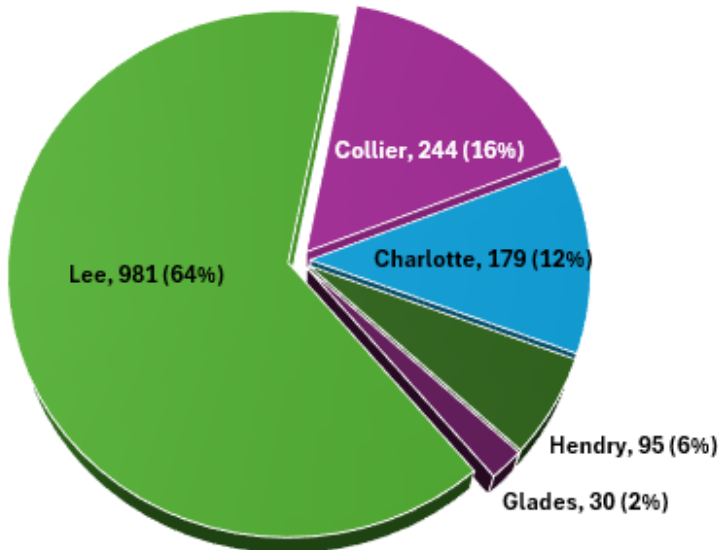
Lee	Collier	Charlotte	Hendry	Glades	Grand Total
166	42	29	16	4	257

Other Out of Home Placements

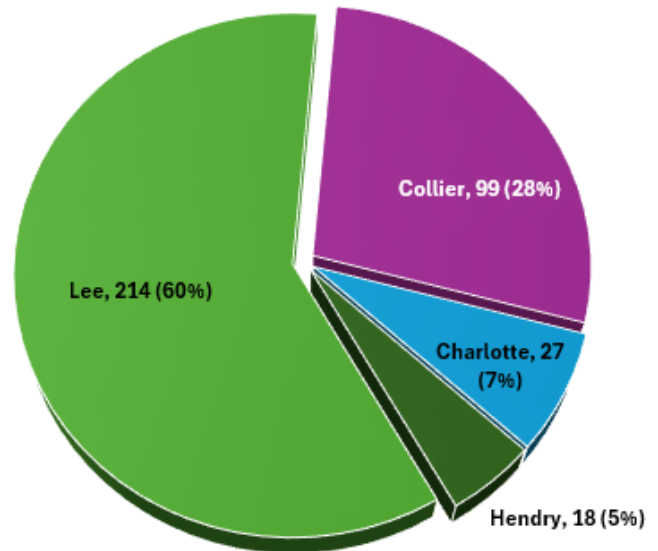
Lee	Collier	Charlotte	Hendry	Glades	Grand Total
133	25	12	10	2	182

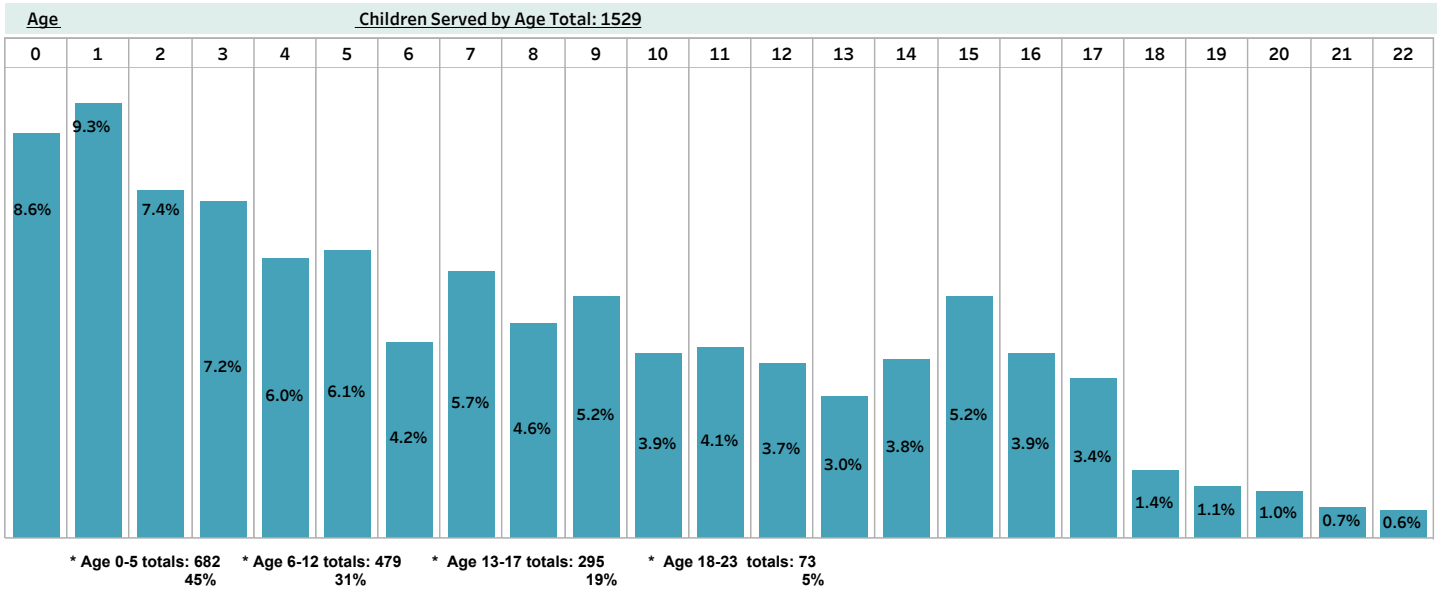
(Other Includes: Adoption Placement, Correctional Placement, Missing Child, Medical-Mental Hospital, EFC and Visitation)

**Children Served by Case County**  
**Total: 1529**



**Children Service by Diversion & Prevention**  
**Total: 358**





**Children Served by Race**

White	Black	American Indian	Asian	All Other	Grand Total
1058	400	19	4	48	1529

**Children Served by Gender**

M	F	Grand Total
790	739	1,529