

**Primary Children Served by Jurisdiction of Case County
September 2024 - Includes IL Youth**

Lee	Collier	Charlotte	Hendry	Glades	Grand Total
994	223	162	95	31	1505

In-Home Case County Jurisdiction

Lee	Charlotte	Collier	Hendry	Glades	Grand Total
423	92	86	29	13	643

Kinship Relative - Kinship Non-Relative Placements

	Charlotte	Collier	Glades	Hendry	Lee	Grand Total
Relative	17	17	4	10	110	158
Non-relative	7	10	4	4	58	83
Grand Total	24	27	8	14	168	241

Kinship Level 1 Licensed Placements

Lee	Collier	Hendry	Charlotte	Glades	Grand Total
101	34	25	8	3	171

Foster Home Placements

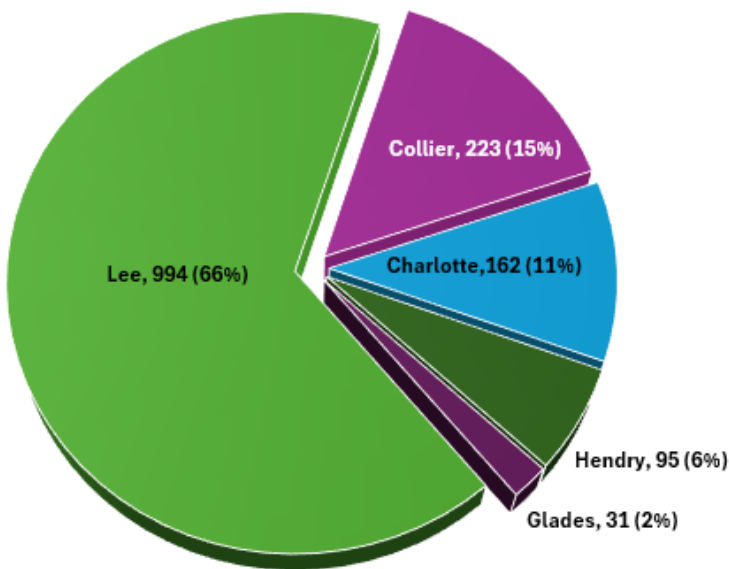
Lee	Collier	Charlotte	Hendry	Glades	Grand Total
172	44	27	13	4	260

Other Out of Home Placements

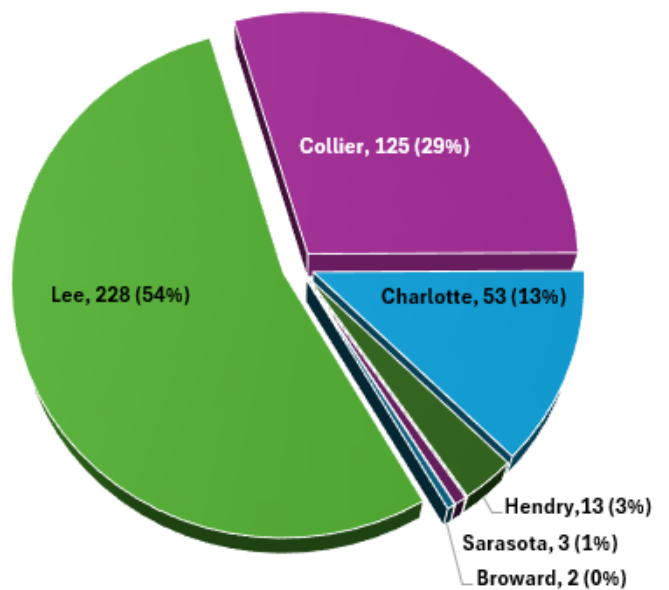
Lee	Collier	Hendry	Charlotte	Glades	Grand Total
130	32	14	11	3	190

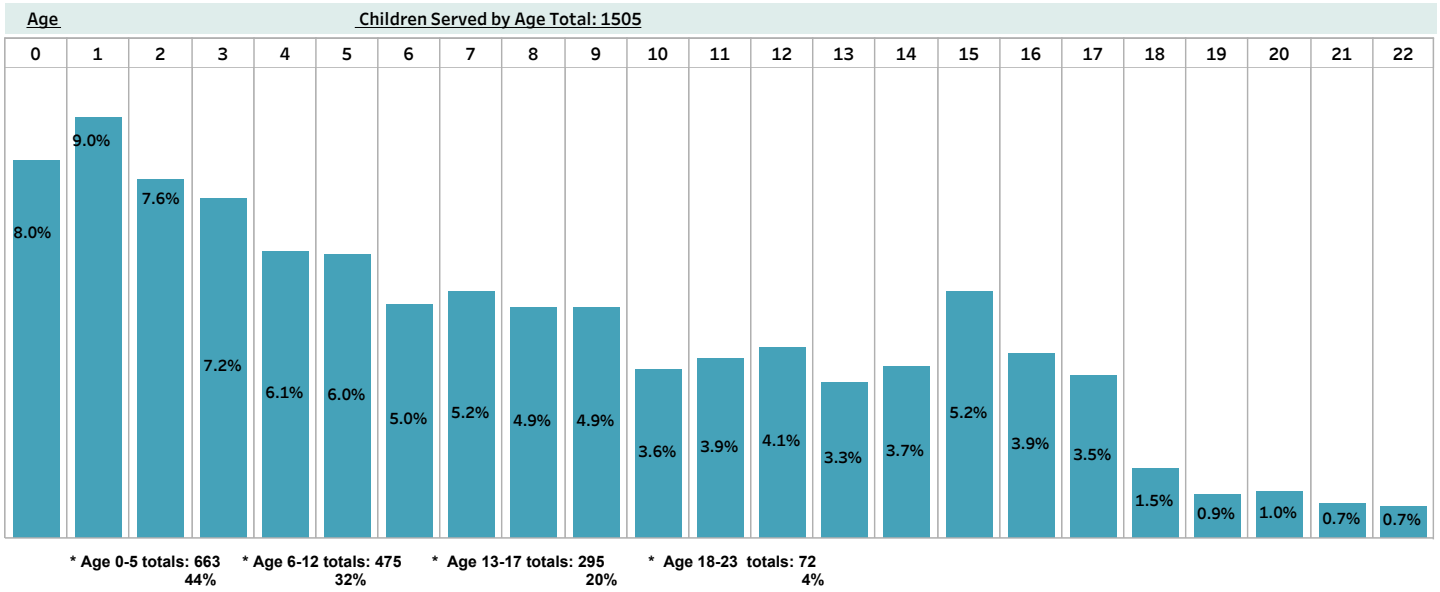
(Other Includes: Adoption Placement, Correctional Placement, Missing Child, Medical-Mental Hospital, EFC and Visitation)

**Children Served by Case County
Total: 1505**



**Children Served by Diversion & Prevention
Total: 424**





Children Served by Race

White	Black	American Indian	Asian	All Other	Grand Total
1052	395	19	3	36	1505

Children Served by Gender

M	F	Grand Total
771	734	1,505