

**Primary Children Served by Jurisdiction of Case County
August 2024 - Includes IL Youth**

Lee	Collier	Charlotte	Hendry	Glades	Grand Total
1007	220	167	99	31	1524

In-Home Case County Jurisdiction

Lee	Charlotte	Collier	Hendry	Glades	Grand Total
425	99	82	31	12	649

Kinship Relative - Kinship Non-Relative Placements

	Charlotte	Collier	Glades	Hendry	Lee	Grand Total
Relative	16	18	5	10	105	154
Non-relative	7	8	4	6	57	82
Grand Total	23	26	9	16	162	236

Kinship Level 1 Licensed Placements

Lee	Collier	Hendry	Charlotte	Glades	Grand Total
109	31	26	9	3	178

Foster Home Placements

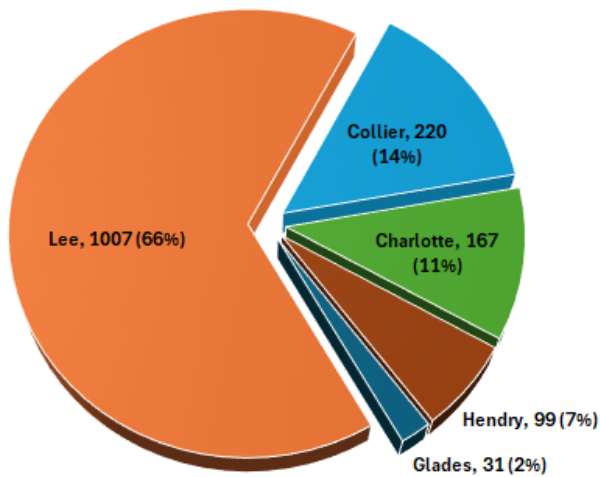
Lee	Collier	Charlotte	Hendry	Glades	Grand Total
183	47	23	12	5	270

Other Out of Home Placements

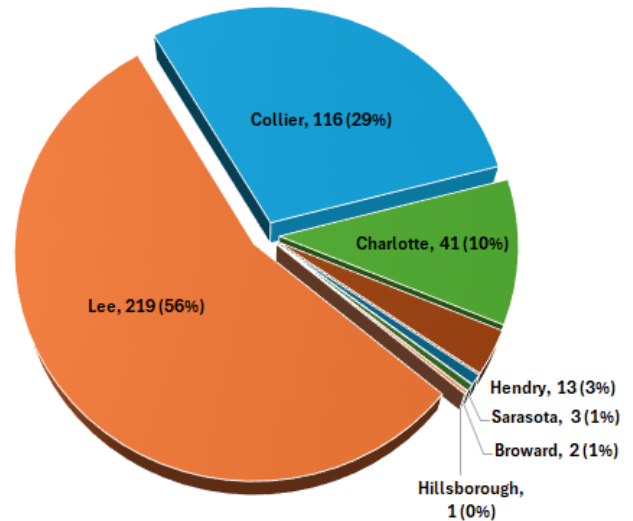
Lee	Collier	Hendry	Charlotte	Glades	Grand Total
128	34	14	13	2	191

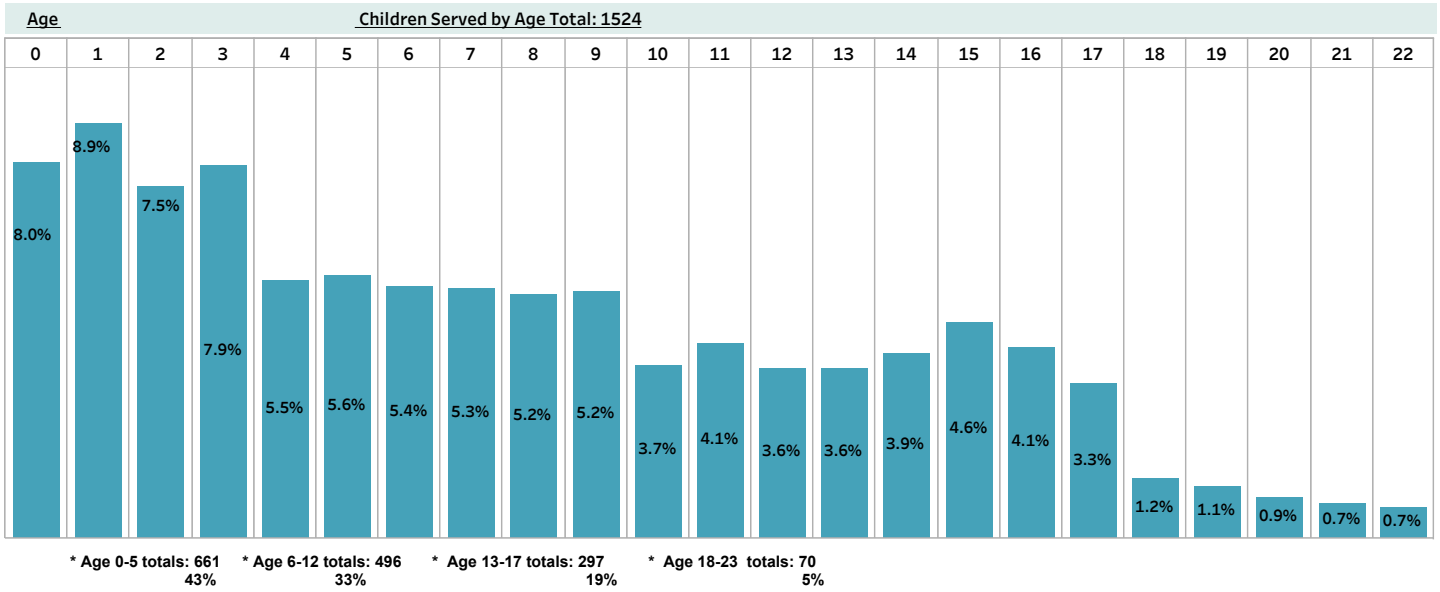
(Other Includes: Adoption Placement, Correctional Placement, Missing Child, Medical-Mental Hospital, EFC and Visitation)

**Children Served by Case County
Total: 1524**



**Children Served by Diversion & Prevention
Total: 395**





Children Served by Race

White	Black	American Indian	Asian	All Other	Grand Total
1062	405	17	3	37	1524

Children Served by Gender

M	F	Grand Total
785	739	1,524