

**Primary Children Served by Jurisdiction of Case County  
July 2024 - Includes IL Youth**

Lee	Collier	Charlotte	Hendry	Glades	Grand Total
1018	234	144	109	25	1530

**In-Home Case County Jurisdiction**

Lee	Collier	Charlotte	Hendry	Glades	Grand Total
434	90	76	41	6	647

**Kinship Relative - Kinship Non-Relative Placements**

	Charlotte	Collier	Glades	Hendry	Lee	Grand Total
Relative	15	21	6	9	111	162
Non-relative	7	9	4	8	58	86
Grand Total	22	30	10	17	169	248

**Kinship Level 1 Licensed Placements**

Lee	Collier	Hendry	Charlotte	Glades	Grand Total
115	34	25	14	2	190

**Foster Home Placements**

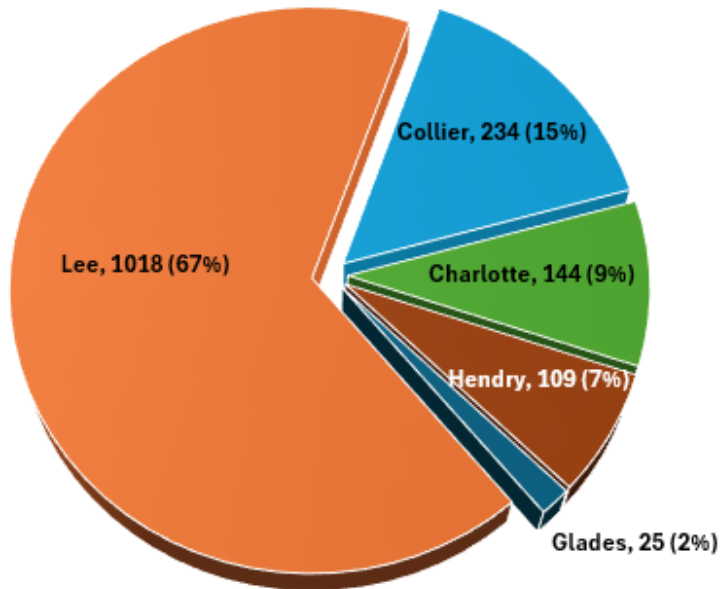
Lee	Collier	Charlotte	Hendry	Glades	Grand Total
179	47	22	11	5	264

**Other Out of Home Placements**

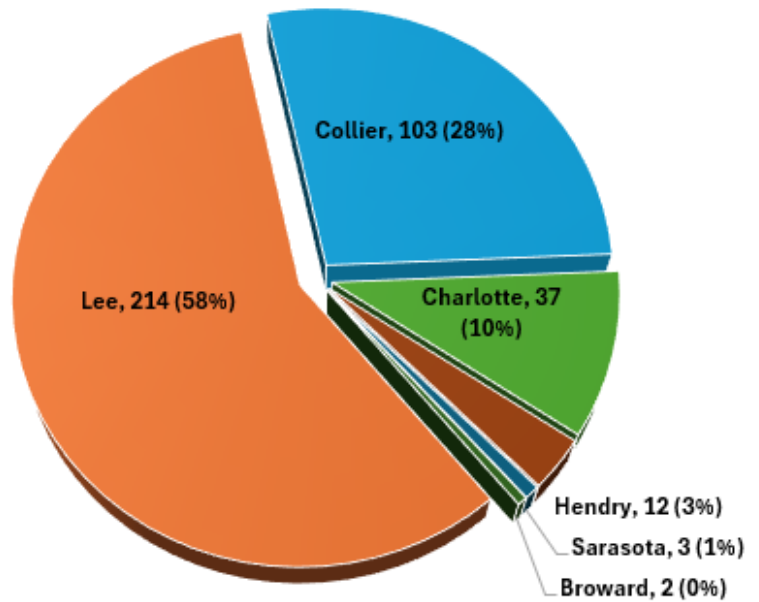
Lee	Collier	Hendry	Charlotte	Glades	Grand Total
121	33	15	10	2	181

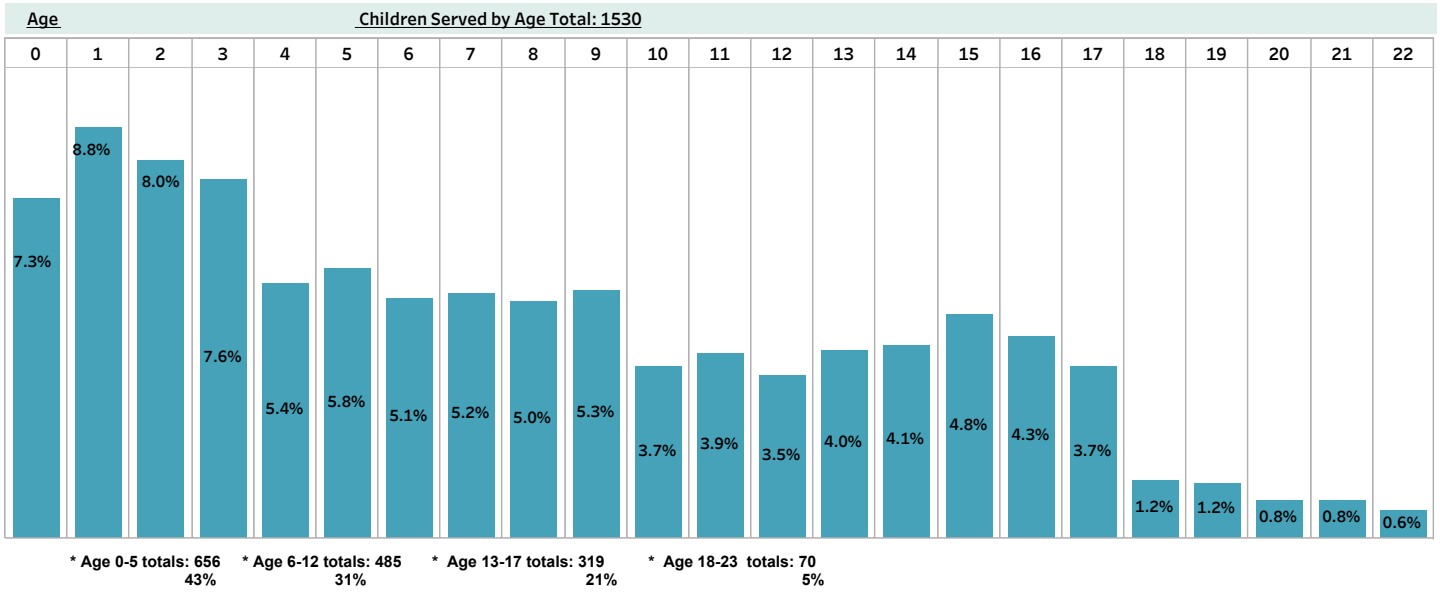
(Other Includes: Adoption Placement, Correctional Placement, Missing Child, Medical-Mental Hospital, EFC and Visitation)

**Children Served by Case County  
Total: 1530**



**Children Served by Diversion & Prevention  
Total: 371**





**Children Served by Race**

White	Black	American Indian	Asian	All Other	Grand Total
1067	417	13	3	30	1530

**Children Served by Gender**

M	F	Grand Total
784	746	1,530