

Primary Children Served by Jurisdiction of Case County
April 2024 - Includes IL Youth

Lee	Collier	Charlotte	Hendry	Glades	Grand Total
1122	273	158	132	19	1704

In-Home Case County Jurisdiction

Lee	Collier	Charlotte	Hendry	Glades	Grand Total
487	112	100	46	1	746

Kinship Relative - Kinship Non-Relative Placements

	Charlotte	Collier	Glades	Hendry	Lee	Grand Total
Relative	9	23	6	22	108	168
Non-relative	7	11	5	20	45	88
Grand Total	16	34	11	42	153	256

Kinship Level 1 Licensed Placements

Lee	Collier	Hendry	Charlotte	Glades	Grand Total
149	42	22	10	1	224

Foster Home Placements

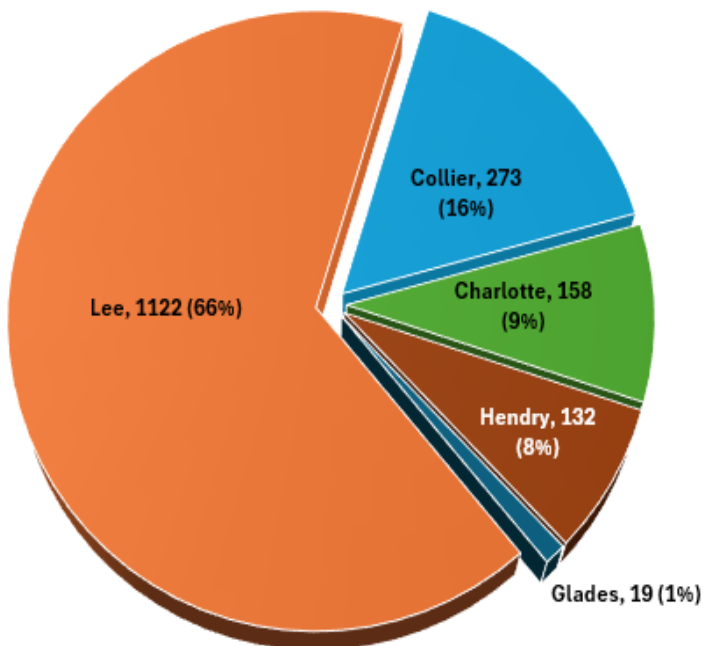
Lee	Collier	Charlotte	Hendry	Glades	Grand Total
211	56	22	8	5	302

Other Out of Home Placements

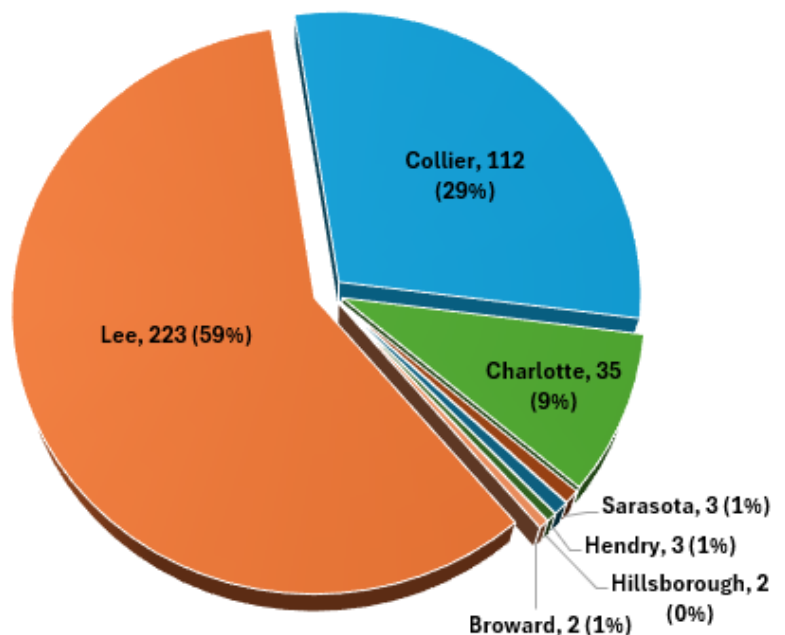
Lee	Collier	Hendry	Charlotte	Glades	Grand Total
122	29	14	10	1	176

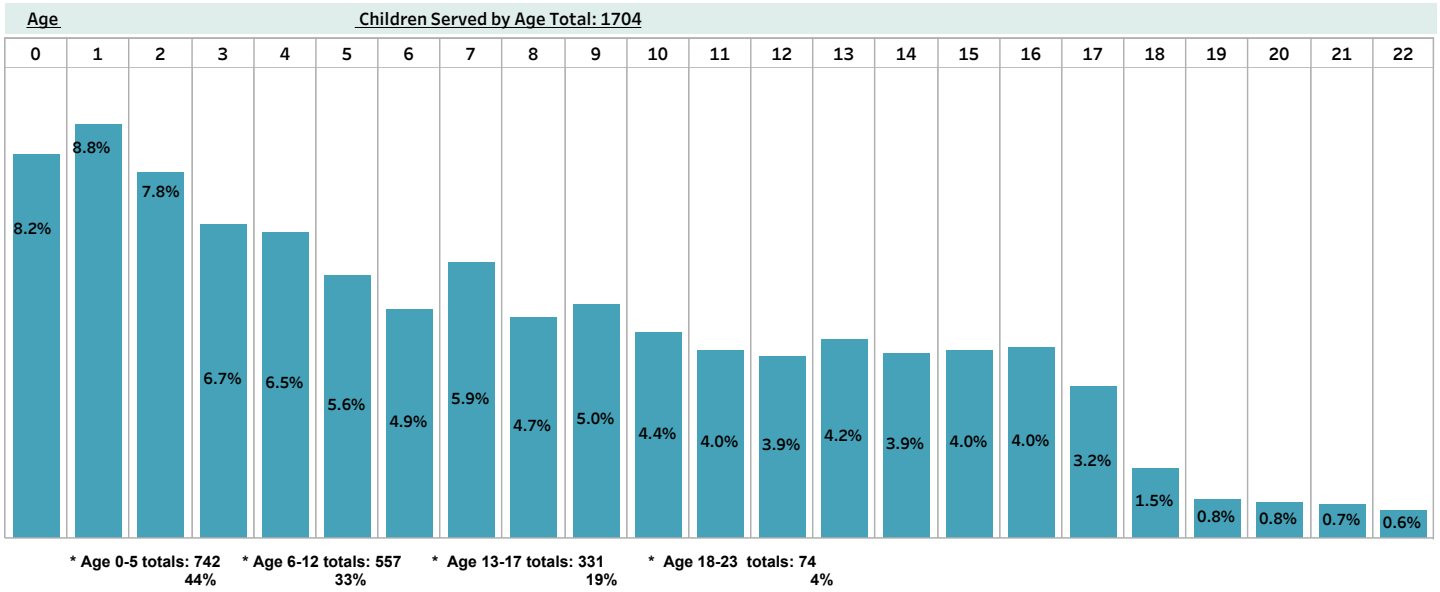
(Other Includes: Adoption Placement, Correctional Placement, Missing Child, Medical-Mental Hospital, EFC and Visitation)

Children Served by Case County
Total: 1704



Children Served by Diversion & Prevention
Total: 380





Children Served by Race

White	Black	American Indian	Asian	All Other	Grand Total
1196	451	16	2	39	1704

Children Served by Gender

M	F	Grand Total
860	844	1,704